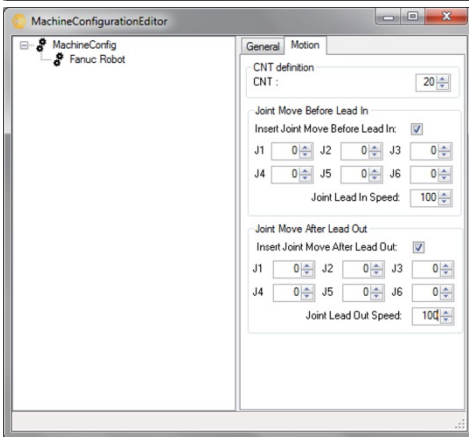
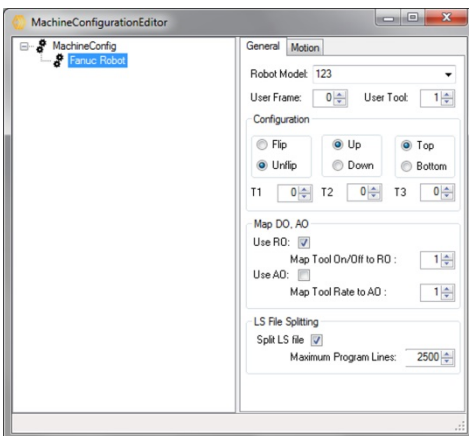
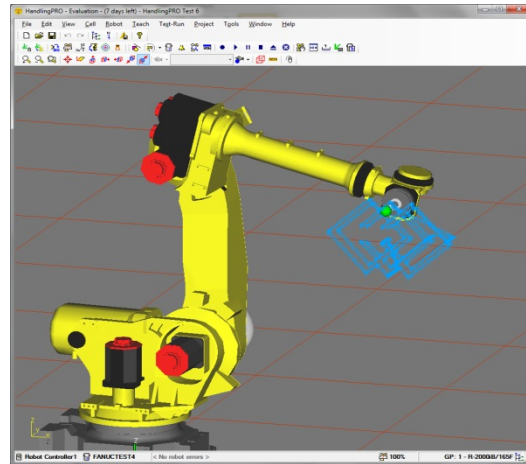
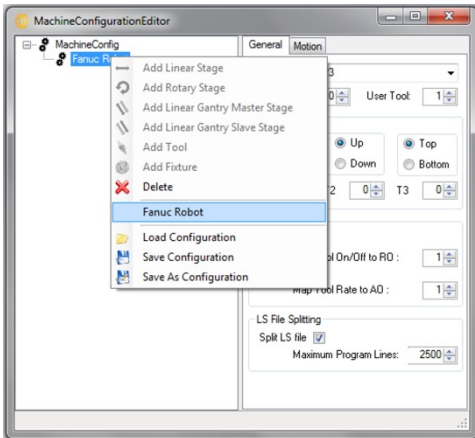


MoDusCAM Cad-to-Motion

MoDusCAM can be used to build paths for FANUC robots and/or test such paths in the Roboguide simulation environment. In other words, **MoDusCAM creates FANUC LS files and generates executable robot paths.**



MoDusCAM™ Options for FANUC Robots

1. Robot model selection
2. User Frame selection
3. Tool Frame Selection
4. Selection of robot's configuration such as:
 - a. Flip/Unflip
 - b. Up/Down
 - c. Top/Bottom
5. Digital I/O mapping
6. Creation of multiple LS files depending on the length of the path.
7. Adjustment of the CNT parameter along the path.
8. Capability to add a Joint Move before LeadIn
9. Capability to add a Joint Move after LeadOut

With our help and our software, you may control a robotic system.